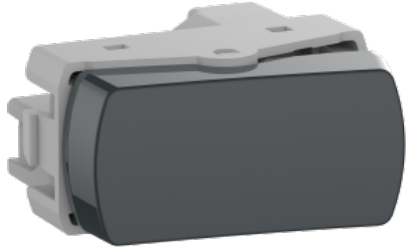


Product data sheet

Specifications



Switch, Miluz, two way, 10AX, 250V, 1 module, graphite

S3B72036

Main

Range	Miluz
Product or component type	Switch

Complementary

Device presentation	Mechanism
Device mounting	Flush
Colour tint	Graphite (RAL 7016)
Type of packing	Flow-pack
Switch function	2-way
Ambient air temperature for operation	-5...45 °C
Number of rocker	1
Local signalling	Without pilot light
Marking	1 - 2 - L
Rated current	10 A
[Ue] rated operational voltage	250 V AC
Material	Thermoplastic ABS-UV stabilised: rocker PA66: casing
Number of modules	1 module
Fixing mode	Clip-in
Connections - terminals	Screw-clamp terminals
Number of cables	2
Cable cross section	4 mm ²
Wire stripping length	12 mm
Surface finish	Glossy
AWG gauge	AWG 12
Height	21.5 mm
Width	44.0 mm
Depth	40.0 mm
Embedding depth	26 mm

Projecting depth	14.5 mm
------------------	---------

Environment

Standards	ABNT NBR NM 60669-2-1 NMX J-508 ANCE IEC 60669
IP degree of protection	IP2x

Packing Units

Unit Type of Package 1	PCE
Number of Units in Package 1	1
Package 1 Weight	20.0 g
Package 1 Height	2.2 cm
Package 1 width	8.5 cm
Package 1 Length	14.0 cm
Unit Type of Package 2	CAR
Number of Units in Package 2	20
Package 2 Weight	400.0 g
Package 2 Height	15.8 cm
Package 2 width	10.7 cm
Package 2 Length	26.5 cm

Offer Sustainability

Sustainable offer status	Green Premium product
REACH Regulation	REACH Declaration
REACH free of SVHC	Yes
EU RoHS Directive	Compliant EU RoHS Declaration
Toxic heavy metal free	Yes
Mercury free	Yes
RoHS exemption information	Yes
China RoHS Regulation	China RoHS declaration Pro-active China RoHS declaration (out of China RoHS legal scope)
Environmental Disclosure	Product Environmental Profile