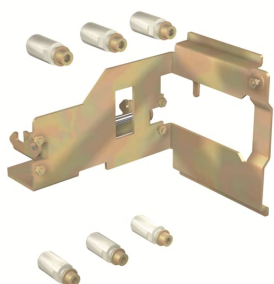


PRODUCT-DETAILS

KIT MP T6 630/800 W 3p

KIT MP T6 630/800 W 3p



Información General

Extended Product Type	KIT MP T6 630/800 W 3p
Product ID	1SDA060390R1
EAN	8015644628543
Catalog Description	KIT MP T6 630/800 W 3p
Long Description	KIT CONVERSION FOR MOVING PART WITHDRAWABLE THREE-POLE T6 630/800

Clasificación

EAN	8015644628543
Minimum Order Quantity	1 piece
Customs Tariff Number	85389099

Dimensiones

Product Net Weight	0.8 kg
--------------------	--------

Información de Embalaje

Package Level 1 Units	1 piece
Package Level 1 Width	180 mm
Package Level 1 Height	180 mm
Package Level 1 Depth /	430 mm

Length	
Package Level 1 Gross Weight	0.8 kg
Package Level 1 EAN	8015644628543

Información Adicional

Configuration Type	Loose or configurable
Number of Poles	3
Product Main Type	Accessories for Tmax T
Product Name	Accessory
Product Type	ACC
Standards	IEC
Suitable For	T6
Suitable for Product Class	SACE Tmax T

Certificados y Declaraciones (Número de Documento)

Data Sheet, Technical Information	1SDC210015D0201
Declaration of Conformity - CE	1SDL000165R0001
Environmental Information	1SDC210015D0201
Instructions and Manuals	1SDC210015D0201
RoHS Information	1SDL000200R0001

Clasificaciones

ETIM 6	EC002049 - Modification set for power circuit breaker
ETIM 7	EC002049 - Modification set for power circuit breaker
Object Classification Code	Q
UNSPSC	39121100
WEEE Category	5. Small Equipment (No External Dimension More Than 50 cm)

Categorías

Productos y sistemas de baja tensión → Interruptores automáticos → Interruptores automáticos en caja moldeada → Accessories for Tmax T

