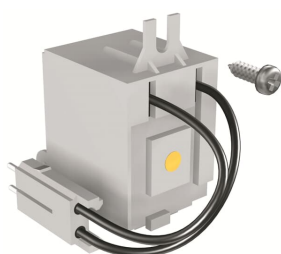


PRODUCT-DETAILS

# SOR-C T4-T5-T6 480...500 Vac

## SOR-C T4-T5-T6 480...500 Vac



### Información General

Extended Product Type	SOR-C T4-T5-T6 480...500 Vac
Product ID	1SDA054875R1
EAN	8015644560034
Catalog Description	SOR-C T4-T5-T6 480...500 Vac
Long Description	SHUNT OPENING RELEASE WIRED 480...525V AC (IEC) 480...500V AC (UL) T4-T5-T6

### Clasificación

EAN	8015644560034
Minimum Order Quantity	1 piece
Customs Tariff Number	85389099

### Dimensiones

Product Net Weight	0.12 kg
--------------------	---------

### Información de Embalaje

Package Level 1 Units	1 piece
Package Level 1 Width	110 mm
Package Level 1 Height	60 mm
Package Level 1 Depth /	140 mm

Length	
Package Level 1 Gross Weight	0.15 kg
Package Level 1 EAN	8015644560034

### Información Adicional

Configuration Type	Loose or configurable
Current Type	AC
Product Main Type	Accessories for Tmax T
Product Name	Accessory
Product Type	ACC
Rated Voltage (U <sub>r</sub> )	480 ... 500 V AC
Standards	IEC
Suitable For	T4, T5, T6
Suitable for Product Class	SACE Tmax T

### Certificados y Declaraciones (Número de Documento)

Data Sheet, Technical Information	1SDC210015D0201
Declaration of Conformity - CE	1SDL000158R137
Environmental Information	1SDC210015D0201
Instructions and Manuals	1SDC210015D0201

### Clasificaciones

ETIM 6	EC002483 - Switch spool for power circuit breaker
ETIM 7	EC002483 - Switch spool for power circuit breaker
Object Classification Code	Q
UNSPSC	39120000
WEEE Category	5. Small Equipment (No External Dimension More Than 50 cm)

### Categorías

Productos y sistemas de baja tensión → Interruptores automáticos → Interruptores automáticos en caja moldeada → Accessories for FORMULA

Productos y sistemas de baja tensión → Interruptores automáticos → Interruptores automáticos en caja moldeada → Accessories for Tmax T

