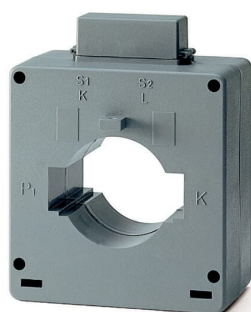


PRODUCT-DETAILS

CT6/250

CT6/250 Current transformer



Información General

Extended Product Type	CT6/250
Product ID	2CSG421130R1101
EAN	8012542605508
Catalog Description	CT6/250 Current transformer
Long Description	CT6/250 is used to transform primary currents to $..5A$ secondary currents for c.a. measurement instruments

Clasificación

EAN	8012542605508
Minimum Order Quantity	1 piece
Customs Tariff Number	85043121

Dimensiones

Product Net Width	105 mm
Product Net Height	26.5 mm
Product Net Depth / Length	61 mm
Product Net Weight	0.450 kg

Información de Embalaje

Package Level 1 Units	1 piece
Package Level 1 Width	0.121 m
Package Level 1 Height	0.061 m
Package Level 1 Depth / Length	0.105 m
Package Level 1 Gross Weight	1 kg
Package Level 1 EAN	8012542605508
Package Level 2 Units	1 piece
Package Level 2 Gross Weight	0.430 kg

Ambiente

Ambient Air Temperature	Funcionamiento -5 ... +50 °C
RoHS Status	Following EU Directive 2002/95/EC August 18, 2005 and amendment

Información Adicional

Accuracy	±0.5%
Cable Cross-Section	50 mm
Cable Use	Cable and Horizontal bar
Current Limit Function	FS 5
Degree of Protection	IP30
Frequency (f)	50 ... 60 Hz
Mounting Type	Through primary
Product Main Type	CT
Product Name	Current transformer
Rated Cross-Section	60 x 20 mm
RoHS Date	31/03/2006 0.00.00
Secondary Output Connection	Screw connection

Certificados y Declaraciones (Número de Documento)

Data Sheet, Technical Information	9AKK107046A0430
Declaration of Conformity - CE	9AKK106713A5700
Environmental Information	See RoHS Information
Instructions and Manuals	on the product body
RoHS Information	2CSC445004K0201

Clasificaciones

ETIM 4

EC002048 - Current transformer

ETIM 5	EC002048 - Current transformer
ETIM 6	EC002048 - Current transformer
ETIM 7	EC002048 - Current transformer
Object Classification Code	T
WEEE Category	5. Small Equipment (No External Dimension More Than 50 cm)

Categorías

Productos y sistemas de baja tensión → Aparatos modulares de instalación → Contadores eléctricos para perfil DIN → Current Transformers

