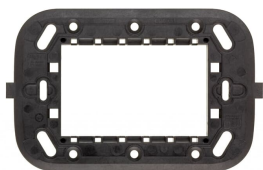


PRODUCT-DETAILS

## 2CSY1603MY

2CSY1603MY Support, 3 modules for rectangular box (screw distance 83.5 mm)



### Información General

Extended Product Type	2CSY1603MY
Product ID	2CSY1603MY
EAN	8012542172956
Catalog Description	2CSY1603MY Support, 3 modules for rectangular box (screw distance 83.5 mm)
Long Description	Support, 3 modules for rectangular box (screw distance 83.5 mm)

### Clasificación

EAN	8012542172956
Minimum Order Quantity	10 piece
Customs Tariff Number	85365080

### Dimensiones

Product Net Width	118 mm
Product Net Height	75 mm
Product Net Depth / Length	2 mm

### Información de Embalaje

Package Level 1 Units	10 piece
Package Level 1 Width	0.075 m

Package Level 1 Height	0.135 m
Package Level 1 Depth / Length	0.11 m
Package Level 1 Gross Weight	0.2 kg
Package Level 1 EAN	8012542172956
Package Level 2 Units	10 piece
Package Level 2 Width	0.16 m
Package Level 2 Height	0.067 m
Package Level 2 Depth / Length	0.217 m
Package Level 2 Gross Weight	0.05 kg
Package Level 2 EAN	8012542172956

### Información Adicional

Color	Black
Degree of Protection	IP20
Illumination	Non-illuminated
Material	Plastic
Product Main Type	Mylos
Product Name	Support, 3 modules for rectangular box (screw distance 83.5 mm)
Surface Finishing	Basic

### Certificados y Declaraciones (Número de Documento)

Data Sheet, Technical Information	0.11_MTRx
Declaration of Conformity - CE	2CSC300010U5101
Instructions and Manuals	0.2_KGMx

### Clasificaciones

ETIM 5	EC000013 - Base plate for flush mounted installation
ETIM 6	EC000007 - Cover frame for domestic switching devices
ETIM 7	EC000007 - Cover frame for domestic switching devices
WEEE Category	Product Not in WEEE Scope

### Categorías

Productos y sistemas de baja tensión → Switch Assortments → Flush Mounted Modular Range - ABB Sace → Design Mylos → Installation Components → Grids / Mounting Plates

