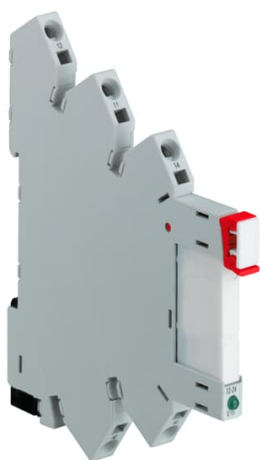


PRODUCT-DETAILS

CR-S110VADC1CRZ

CR-S110VADC1CRZ Interface relay cpl. 1c/o, A1-A2=110VAC/DC, Output=6A/250VAC



Información General

Extended Product Type	CR-S110VADC1CRZ
Product ID	1SVR405541R6210
EAN	4013614499340
Catalog Description	CR-S110VADC1CRZ Interface relay cpl. 1c/o, A1-A2=110VAC/DC, Output=6A/250VAC
Long Description	CR-S110VADC1CRZ Interface relay cpl. 1c/o, A1-A2=110VAC/DC, Output=6A/250VAC spring terminals

Clasificación

Minimum Order Quantity	10 piece
Customs Tariff Number	85364900

Descargas Populares

Data Sheet, Technical Information	2CDC117022D0201
Instructions and Manuals	2CDC117022D0201

Dimensiones

Product Net Width	6.2 mm
Product Net Height	76.6 mm

Product Net Depth / Length	94.7 mm
Product Net Weight	0.03 kg

Technical

Function	Fully assembled interface relay CR-S
Sub-Function	Relay with standard contacts
Output	1 c/o (SPDT) contact
Output Signal	250 V / 6 A
Rated Control Supply Voltage (U _s)	110 V AC/DC
Terminal Type	Spring Terminals

Ambiente

Ambient Air Temperature	Funcionamiento -40 ... +55 °C Almacenamiento 0 ... +40 °C
RoHS Status	Following EU Directive 2011/65/EU

Technical UL/CSA

Connecting Capacity UL/CSA	Flexible 14 AWG Rigid 14 AWG
Tightening Torque UL/CSA	4.42 in-lb

Certificados y Declaraciones (Número de Documento)

CSA Certificate	CSA_262671-2785865
cURus Certificate	cURus508_E244328
Declaration of Conformity - CE	1SVD982017-0001
EAC Certificate	EAC_RU_C-DE.ME77.B.00443-19
Environmental Information	1SAA981009-2403
Instructions and Manuals	2CDC117022D0201
RoHS Information	1SVD982017-0001

Información de Embalaje

Package Level 1 Units	10 piece
Package Level 1 Width	93 mm
Package Level 1 Height	81 mm
Package Level 1 Depth / Length	66 mm
Package Level 1 Gross Weight	0.32 kg
Package Level 1 EAN	4013614486715

Clasificaciones

Object Classification Code	K
ETIM 4	EC001437 - Switching relay
ETIM 5	EC001437 - Switching relay

ETIM 6	EC001437 - Switching relay
ETIM 7	EC001437 - Switching relay
eClass	7.0 27371601
E-Number (Sweden)	4001406

Categorías

Productos y sistemas de baja tensión → Aparatos de control → Relés electrónicos → Relés de interface

