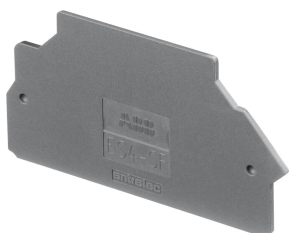


PRODUCT-DETAILS

## ES4-SF

### ES4-SF End Section - Dark Grey



#### Información General

Extended Product Type	ES4-SF
Product ID	1SNK508960R0000
EAN	3472595089604
Catalog Description	ES4-SF End Section - Dark Grey
Long Description	Compatible with fuse ZS4-SF1... and disconnect screw clamp terminal blocks ZS4-S-R3.

#### Clasificación

Color	Dark Grey
Minimum Order Quantity	20 piece
Customs Tariff Number	39269097

#### Descargas Populares

Data Sheet, Technical Information	1SNK160019D0201
Instructions and Manuals	1SNK160027C0201

#### Dimensiones

Product Net Width	1.5 mm
Product Net Height	59 mm

Product Net Length	59 mm
Product Net Depth / Length	31.9 mm
Product Net Weight	1.8 g

## Technical

Spacing	1.5 mm
Function	End Sections
Pollution Degree	3
Degree of Protection	acc. to IEC 60529, IEC 60947-1, EN 60529 Main Terminals IP20
Insulation Material	Polyamide
Mounting on DIN Rail	G32 (32 x 15 mm Mounting Rail) acc. to IEC 60715 TH35-7.5 (35 x 7.5 mm Mounting Rail) acc. to IEC 60715 TH35-15 (35 x 15 mm Mounting Rail) acc. to IEC 60715 TH15-5.5 (15 x 5.5 mm Mounting Rail) acc. to IEC 60715
Suitable For	ZS4-R1 ZS4-SF1 ZS4-SF1-R ZS4-SF1-T ZS4-S-R3

## Technical UL/CSA

Flammability According to UL94	V-0
--------------------------------	-----

## Ambiente

Ambient Air Temperature	Funcionamiento -55 ... +110 °C Almacenamiento -55 ... +110 °C
Resistance to Vibrations acc. to IEC 60068-2-6	Compliant
RoHS Status	Following EU Directive 2002/95/EC August 18, 2005 and amendment

## Certificados y Declaraciones (Número de Documento)

Environmental Information	1SND220077E1000
Instructions and Manuals	1SNK160027C0201
RoHS Information	1SND230497F0203

## Clasificaciones

Object Classification Code	X
ETIM 4	EC000886 - Endplate and partition plate for terminal block
ETIM 5	EC000886 - Endplate and partition plate for terminal block
ETIM 6	EC000886 - Endplate and partition plate for terminal block

## Información de Embalaje

Package Level 1 Units	20 piece
Package Level 1 Width	158 mm
Package Level 1 Depth / Length	243 mm

Package Level 1 Gross Weight	0.036 kg
Package Level 1 EAN	3472595089604
Package Level 2 Units	2000 piece
Package Level 2 Gross Weight	3.6 kg

---

## Categorías

---

Productos y sistemas de baja tensión → Accesorios de conexión → Terminal Blocks Accessories → End Sections

