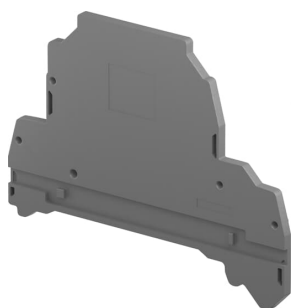


PRODUCT-DETAILS

# ES4-D2-SF1

## ES4-D2-SF1 End Section - Dark Grey



### Información General

Extended Product Type	ES4-D2-SF1
Product ID	1SNK508911R0000
EAN	3472595089116
Catalog Description	ES4-D2-SF1 End Section - Dark Grey
Long Description	Compatible with ZS4-D2-SF1 ... terminal blocks.

### Clasificación

Color	Dark Grey
Minimum Order Quantity	20 piece
Customs Tariff Number	39269097

### Descargas Populares

Data Sheet, Technical Information	1SNK160027C0201
Instructions and Manuals	1SNK160027C0201

### Dimensiones

Product Net Width	2.5 mm
Product Net Height	84.5 mm

Product Net Depth / Length	63.1 mm
Product Net Weight	5 g

## Technical

Spacing	2.5 mm
Function	End Sections
Degree of Protection	acc. to IEC 60529, IEC 60947-1, EN 60529 Main Terminals IP20
Insulation Material	Polyamide
Mounting on DIN Rail	G32 (32 x 15 mm Mounting Rail) acc. to IEC 60715 TH35-7.5 (35 x 7.5 mm Mounting Rail) acc. to IEC 60715 TH35-15 (35 x 15 mm Mounting Rail) acc. to IEC 60715 TH15-5.5 (15 x 5.5 mm Mounting Rail) acc. to IEC 60715
Suitable For	ZS4-D2-SF1 ZS4-D2-SF1-R

## Technical UL/CSA

Flammability According to UL94	V-0
--------------------------------	-----

## Ambiente

Ambient Air Temperature	Funcionamiento -55 ... +110 °C Almacenamiento -55 ... +110 °C
RoHS Status	Following EU Directive 2002/95/EC August 18, 2005 and amendment

## Certificados y Declaraciones (Número de Documento)

Instructions and Manuals	1SNK160027C0201
RoHS Information	1SND230491F0206

## Clasificaciones

Object Classification Code	X
----------------------------	---

## Información de Embalaje

Package Level 1 Units	20 piece
Package Level 1 Width	130 mm
Package Level 1 Depth / Length	280 mm
Package Level 1 Height	0 mm
Package Level 1 Gross Weight	0.12 kg
Package Level 1 EAN	3472595089116
Package Level 2 Units	1000 piece
Package Level 2 Width	300 mm
Package Level 2 Depth / Length	300 mm
Package Level 2 Height	400 mm
Package Level 2 Gross Weight	5.98 kg

---

## Categorías

---

Productos y sistemas de baja tensión → Accesorios de conexión → Terminal Blocks Accessories → End Sections

