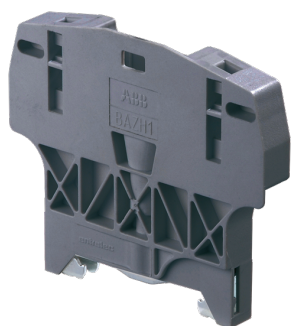


PRODUCT-DETAILS

BAZH1

BAZH1 End Stop - Dark Grey



Información General

Extended Product Type	BAZH1
Product ID	1SNK900102R0000
EAN	3472599163690
Catalog Description	BAZH1 End Stop - Dark Grey
Long Description	- Give efficient support to the SNK double deck or power terminal blocks assemblies thanks to the BAZH1 double gripping rail contact, - Ease the assemblies identification with label holders.

Clasificación

Color	Dark Grey
Minimum Order Quantity	20 piece
Customs Tariff Number	85369010

Descargas Populares

Data Sheet, Technical Information	1SNK160026D0201
Instructions and Manuals	1SNK160027C0201

Dimensiones

Product Net Width	10 mm
-------------------	-------

Product Net Height	74.4 mm
Product Net Length	30.2 mm
Product Net Depth / Length	64.5 mm
Product Net Weight	24 g

Technical

Spacing	10 mm
Connection Type	Screw Clamp
Function	End Stops
Pollution Degree	3
Degree of Protection	acc. to IEC 60529, IEC 60947-1, EN 60529 Main Terminals IP20
Insulation Material	Polyamide
Mounting on DIN Rail	TH35-7.5 (35 x 7.5 mm Mounting Rail) acc. to IEC 60715 TH35-15 (35 x 15 mm Mounting Rail) acc. to IEC 60715
Recommended Screw Driver	5.5 mm
Suitable For	D35/16.PEN.2L RGW25-M5 RGW25-M6 RGW6-R1 RGW6-ST-1 ZDK2.5-22 ZDK4-22 ZDP2.5-D1 ZDP2.5-D2 ZDS4-22 ZDS4-22-R1 ZK10 ZK10-3P ZK10-PE ZK10-PE-3P ZK16 ZK16-3P ZK16-PE ZK16-PE-3P ZK2.5 ZK2.5-3P ZK2.5-4P ZK2.5-CH-4P ZK2.5-D1 ZK2.5-D1-PE ZK2.5-D2 ZK2.5-D2-PE ZK2.5-

Technical UL/CSA

Flammability According to UL94	V-0
--------------------------------	-----

Ambiente

Ambient Air Temperature	Funcionamiento -55 ... +110 °C Almacenamiento -55 ... +110 °C
Resistance to Vibrations acc. to IEC 60068-2-6	Compliant
RoHS Status	Following EU Directive 2011/65/EU

Certificados y Declaraciones (Número de Documento)

Environmental	1SND220078E1000
---------------	-----------------

Information

Instructions and Manuals	1SNK160027C0201
RoHS Information	1SND230479F0206

Clasificaciones

Object Classification Code		X
ETIM 4	EC001041 - End bracket for terminal block	
ETIM 5	EC001041 - End bracket for terminal block	
ETIM 6	EC001041 - End bracket for terminal block	

Información de Embalaje

Package Level 1 Units	20 piece
Package Level 1 Width	225 mm
Package Level 1 Depth / Length	320 mm
Package Level 1 Height	5 mm
Package Level 1 Gross Weight	0.48 kg
Package Level 1 EAN	3472599163690
Package Level 2 Units	360 piece
Package Level 2 Width	300 mm
Package Level 2 Depth / Length	400 mm
Package Level 2 Height	200 mm
Package Level 2 Gross Weight	8.64 kg
Package Level 3 Units	17280 piece

Categorías

Productos y sistemas de baja tensión → Accesorios de conexión → Terminal Blocks Accessories → End Stops

