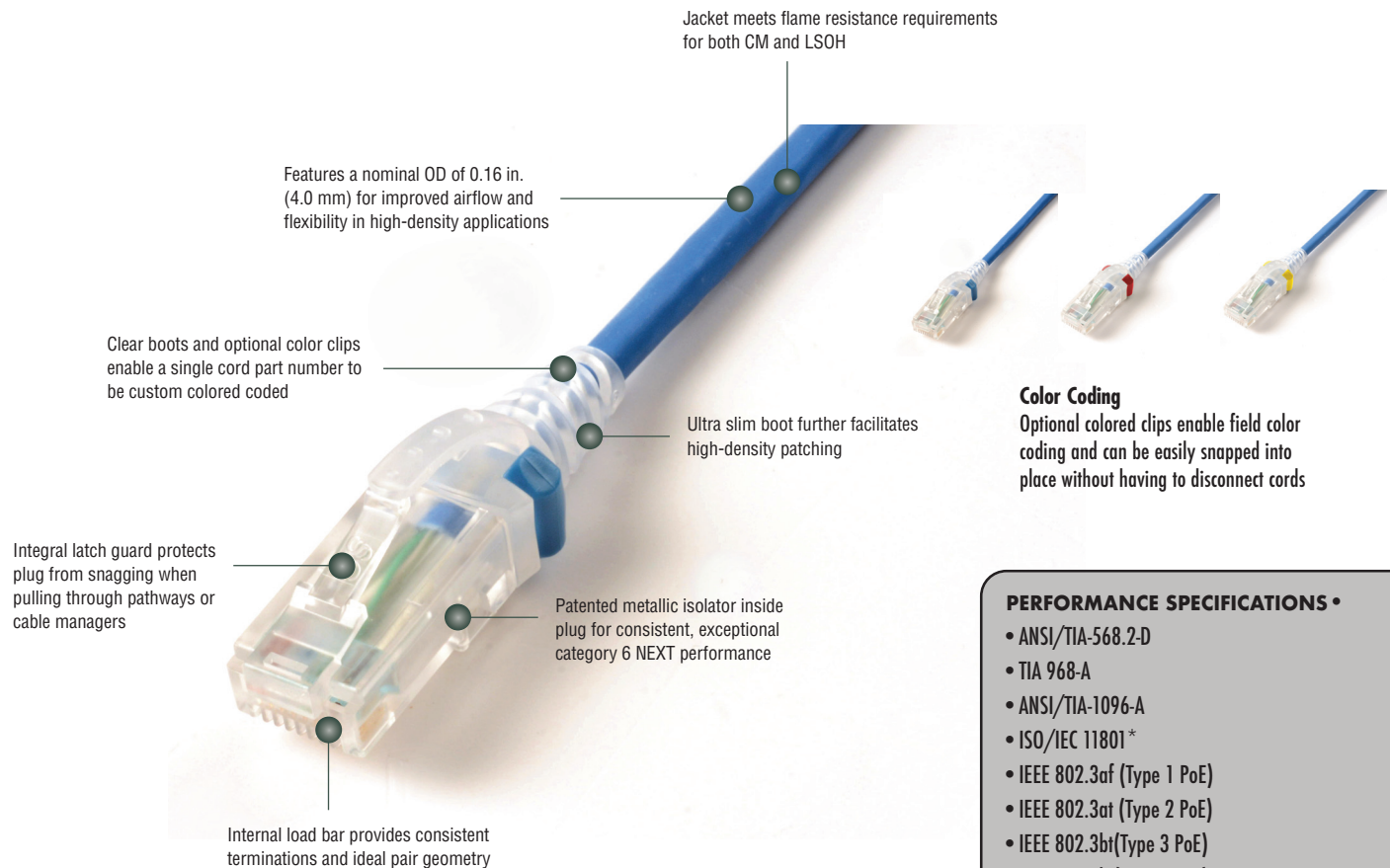


SkinnyPatch™ 6 UTP Modular Cords – US

Siemon's SkinnyPatch 6 Modular Cords deliver category 6 performance with a reduced cable diameter for improved airflow and increased flexibility in high-density patching areas. The cord's smaller 28 AWG stranded copper construction offers a significantly tighter bend radius for easier cable routing and enhanced cable management, providing pathway space savings in racks and cabinets while facilitating moves, adds and changes in tight spaces. Confirmed by Intertek, an independent third party test lab, SkinnyPatch 6 Modular Cords exceed ANSI/TIA-568.2-D and ISO/IEC 11801-1 Ed 1.0 performance standards. These cords also feature Siemon's patented metallic isolator for exceptional NEXT performance and innovative 360-degree crimp for excellent plug-to-cable strain relief.



Color Coding

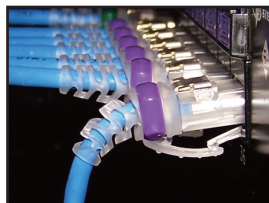
Optional colored clips enable field color coding and can be easily snapped into place without having to disconnect cords

PERFORMANCE SPECIFICATIONS •

- ANSI/TIA-568.2-D
- TIA 968-A
- ANSI/TIA-1096-A
- ISO/IEC 11801*
- IEEE 802.3af (Type 1 PoE)
- IEEE 802.3at (Type 2 PoE)
- IEEE 802.3bt (Type 3 PoE)
- IEEE 802.3bt (Type 4 PoE)
- Power over HDBaseT (PoH)
- IEC 60603-7
- cUL US Listed
- IEC 60332-1, 60754, 61034

*Patch cord length is limited to 8 meters for a maximum channel length of 98 meters.

** See table for recommended maximum bundle size



Excellent Bend Relief

Boot and integrated strain relief ensures minimum bend radius for category 6 performance



Diameter

Smaller diameter cable significantly reduces bundle and pathway fill for space savings.



Improved Airflow

Offers improved airflow, accessibility and cable management in high-density applications.

PRODUCT INFORMATION

PERFORMANCE SPECIFICATIONS*

ELECTRICAL	
Contact Resistance	20 mΩ
Input to Output DC Resistance	200 mΩ
Min. Dielectric Withstand Voltage (contact to contact)	1000 V DC or AC peak
Insulation Resistance	500 mΩ
Compatibility	Category 6 and 5e
Current Rating @ 25°C (77°F)	1.5 A
Remote Powering	PoE Type 1, Type 2, UPoE, PoH
Attenuation De-rating Factor	1.9
MECHANICAL — GENERAL	
Operating Temperature	-20 to 75 °C (-4 to 167 °F)
Flammability Rating	UL 94 - V0
Green Features	RoHS, lead-free, halogen-free, PVC free
Contact Materials	Copper alloy with contact plating of 50 microinches gold or equivalent
Plastic Materials	Flame retardant thermoplastic
Marking	P/N, length, performance level

MECHANICAL — PLUG	
Number of Plug Insertion Cycles	750
Min. Plug Retention Force	50N (11.24 lbf)
Plug Compatibility	Compatible with RJ45 outlets
MECHANICAL — CABLE	
Wire Size (Nominal)	28 AWG 7x36 Stranded bare copper
Construction	UTP
Cable O.D. (Nominal)	4.0mm (0.16 in.)
Wiring	T568A/B as specified by part #
Jacket Type	CM/LSOH
Bend Radius	16mm (0.64 in.)

MAXIMUM RECOMMENDED BUNDLE SIZE		
Application	Current per Pair (mA)	28 AWG Patch Cords
Type 1 PoE (15.4 W)	350	48
Type 2 PoE (30 W)	600	48
Type 3 PoE (60 W)	600	24
Type 4 PoE (90 W)	960	24
PoH (100 W)	1000	24

Ordering Information:

MC6-(XX)-(YY)-28 SkinnyPatch Category 6 double-ended, 4-pair, 28 AWG UTP stranded modular patch cord, T568A/B, clear boot.

Length	Jacket Color		
03 = 0.9m (3 ft.)	01 = Black	04 = Gray	07 = Green
05 = 1.5m (5 ft.)	02 = White	05 = Yellow	08 = Violet
07 = 2.1m (7 ft.)	03 = Red	06 = Blue	09 = Orange
10 = 3.1m (10 ft.)			
15 = 4.6m (15 ft.)			
20 = 6.1m (20 ft.)			

ⓑ Add "B" to end of part number for bulk project pack of 100 cords.

CLIP-(XX) Color coding clip, bag of 25

Clip Color		
01 = Black	04 = Gray	07 = Green
02 = White	05 = Yellow	08 = Violet
03 = Red	06 = Blue	09 = Orange



Because we continuously improve our products, Siemon reserves the right to change specifications and availability without prior notice.

Because we continuously improve our products, Siemon reserves the right to change specifications and availability without prior notice.

Worldwide Headquarters
North America
 Watertown, CT USA
 Phone (1) 860 945 4200

Regional Headquarters
Europe Russia Africa
 Chertsy, Surrey, England
 Phone (44) 0 1932 571771

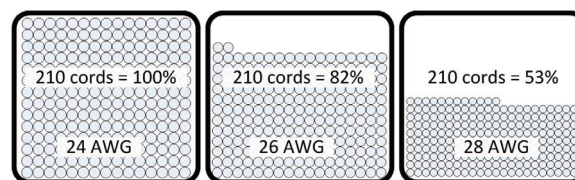
Regional Headquarters
China
 Shanghai, P.R. China
 Phone (86) 215385 0303

Regional Headquarters
Latin America
 Bogota, Colombia
 Phone (571) 657 1950/51/52

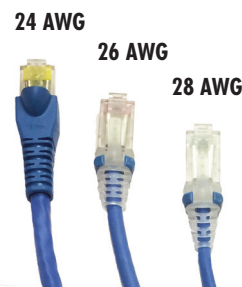
Regional Headquarters
India Middle East
 Dubai, United Arab Emirates
 Phone (971) 4 3689743

Regional Headquarters
Asia Pacific
 Sydney, Australia
 Phone (61) 2 8977 7500

Siemon Interconnect Solutions
Watertown, CT USA
 Phone (1) 860 945 4213 US
 www.siemon.com/SIS



Fill Comparison: Category 6 Cords in a 101mm (4 in.) cable manager



Construction
 Smaller 28 AWG construction results in a smaller bend radius for easier routing in tight spaces.

