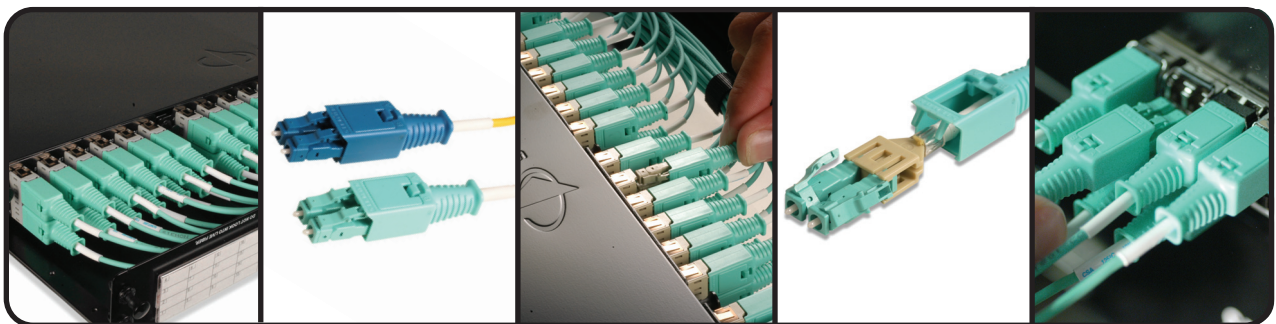
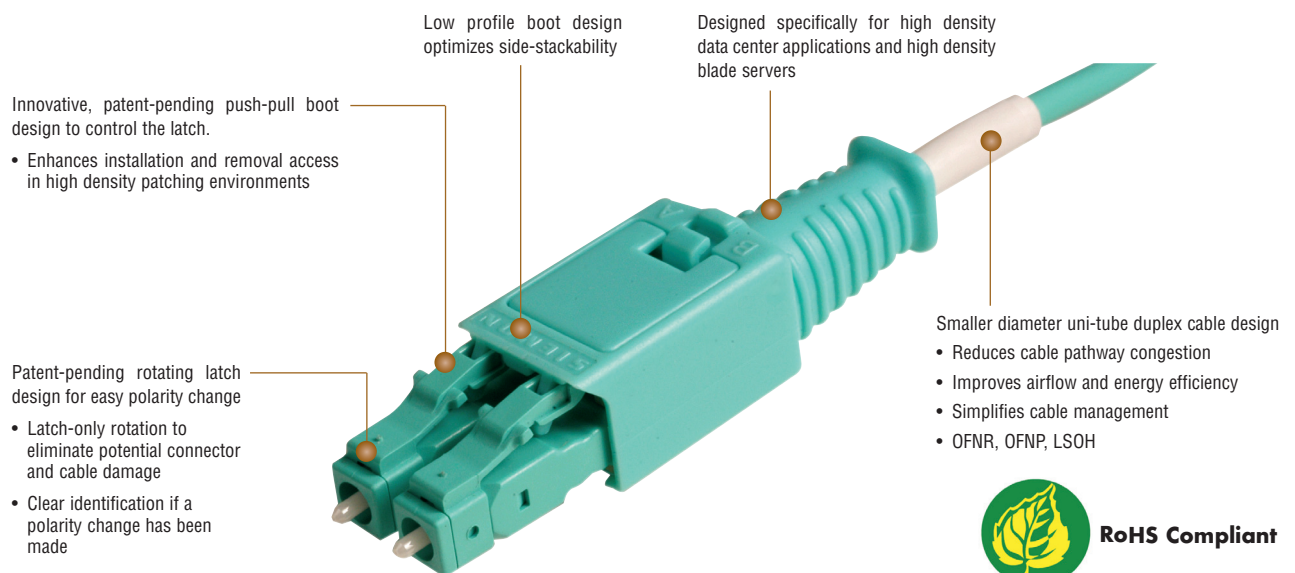


LC BladePatch[®]

Siemon's LC BladePatch duplex jumper offers a unique solution for high-density fiber optic patching environments. It features a revolutionary and innovative push-pull boot design to control the latch, enabling easy access and removal in tight-fitting areas. The LC BladePatch utilizes a smaller diameter uni-tube cable design which reduces cable pathway congestion improving air flow and increasing energy efficiency while simplifying overall cable management. The LC BladePatch provides low-loss performance for Multimode and Singlemode supporting the precise optical performance requirements for high speed networks and improving network performance. The LC BladePatch is ideal for patching high density blade servers, patch panels and equipment.

XGLO cable assemblies feature premium fibre that meets IEEE, specifications for OM3 and OM4 fiber. In addition, these assemblies offer a superior connector polish that meets stringent Telcordia and ISO/IEC specifications for end-face geometry and exceeds all ANSI/TIA and ISO/IEC insertion loss and return loss requirements. These precision cable assemblies are warranted for 20 years when installed in a qualified XGLO system. 100% inspection ensures superior performance and quality.



Low profile boot design optimizes side-stackability

OM3 and OM4 50/125 Multimode and OS1/OS2 Singlemode (UPC)

The push-pull design enables easy access and removal via the boot in tight-fitting areas

Rotating latch design eliminates potential fiber damage during polarity changes

Fits within any standard LC adapter opening or LC SFP module

Note: Compatible with industry compliant non-shutter LC adapters. When using internal shutter LC adapters, the LC BladePatch is only compatible with the Siemon version

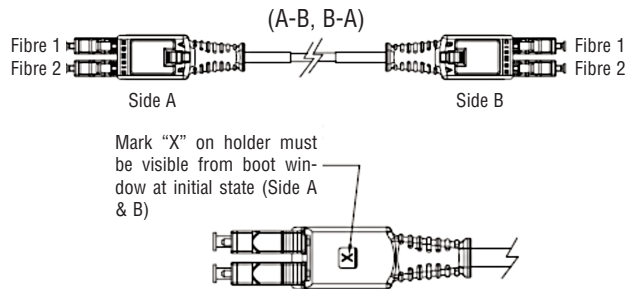
Product Information

PERFORMANCE SPECIFICATIONS

| | OM3 50/125µm Multimode | | | OM4 50/125µm Multimode | | | OS1/OS2 Singlemode |
|-------------------------------|------------------------|--------------|---------------|------------------------|--------------|---------------|---------------------|
| Wavelength (nm) | 850 | 1300 | 850* | 850 | 1300 | 850* | 1310/1550nm |
| Min. Cable Bandwidth (MHz*km) | 1500 (OFL) | 500 (OFL) | 2000 (EMB) | 3500 (OFL) | 500 (OFL) | 4700 (EMB) | N/A |
| Max. Insertion Loss (dB) | 0.15 (0.10 Typical) | | | 0.15 (0.10 Typical) | | | 0.25 (0.10 Typical) |
| Min. Return Loss (dB) | 30 (35 Typical) | | | 30 (35 Typical) | | | 55 (60 Typical) |

*Laser Bandwidth

Polarity Option - RFP (Reverse Fibre Position)



Ordering Information:

| | |
|--|--|
| FBP-(XX)(X)(XX)(X)(XX)-(XXX)(XX)(X)XGLO LC BladePatch: reverse fibre position, Multimode OM3, OM4 50/125µm Singlemode - OS1/OS2 | |
| Side A - Connector LC = LC | Package Blank = Non Bulk B = Bulk Available in lengths up to 5 meters (16.4 ft.) or less. Remove dashes "-" and add "B" to the end of the part number for bulk pack of 100 jumpers (10 per bag) |
| Side A - Mode/Performance Blank = Multimode U = UPC Singlemode | Jacket Rating/Colour Blank = Riser (OFNR) Yellow cable, Blue connectivity P = Plenum (OFNP) Yellow cable, Blue connectivity H = LSOH (IEC 60332-3C) Yellow cable, Blue connectivity AQ = Riser (OFNR) Aqua cable & connectivity (OM3, OM4) AP = Plenum (OFNP) Aqua cable & connectivity (OM3, OM4) AH = LSOH (IEC 60332-3C) Aqua cable & connectivity (OM3, OM4) EQ = Riser (OFNR) Erika Violet cable & connectivity (OM4 only) EP = Plenum (OFNP) Erika Violet cable & connectivity (OM4 only) EH = LSOH (IEC 60332-3C) Erika Violet cable & connectivity (OM4 only) |
| Side B - Connector LC = LC | Length Examples: 01 = 1 metre (3 ft) 100 = 100 metre (328 ft) |
| Side B - Mode/Performance Blank = Multimode U = UPC Singlemode | |
| Fibre Type 5L = OM3 XGLO 300 50/125 Multimode 5V = OM4 XGLO 550 50/125 Multimode L = OS1/OS2 Singlemode | |

Note: Polarity CFP (Continuous fibre position) is available as an option.

Remove the first dash "-" and add C to the end of the part number.

Example: FBPLCLC5L-(XX)AQC

Because we continuously improve our products, Siemon reserves the right to change specifications and availability without prior notice.

Worldwide Headquarters
North America
Watertown, CT USA
Phone (1) 860 945 4200

Regional Headquarters
Europe Russia Africa
Chertsey, Surrey, England
Phone (44) 0 1932 571771

Regional Headquarters
China
Shanghai, P.R. China
Phone (86) 215385 0303

Regional Headquarters
Latin America
Bogota, Colombia
Phone (571) 657 1950/51/52

Regional Headquarters
India Middle East
Dubai, United Arab Emirates
Phone (971) 4 3689743

Regional Headquarters
Asia Pacific
Sydney, Australia
Phone (61) 2 8977 7500

Siemon Interconnect Solutions
Watertown, CT USA
Phone (1) 860 945 4213 US
www.siemon.com/SIS