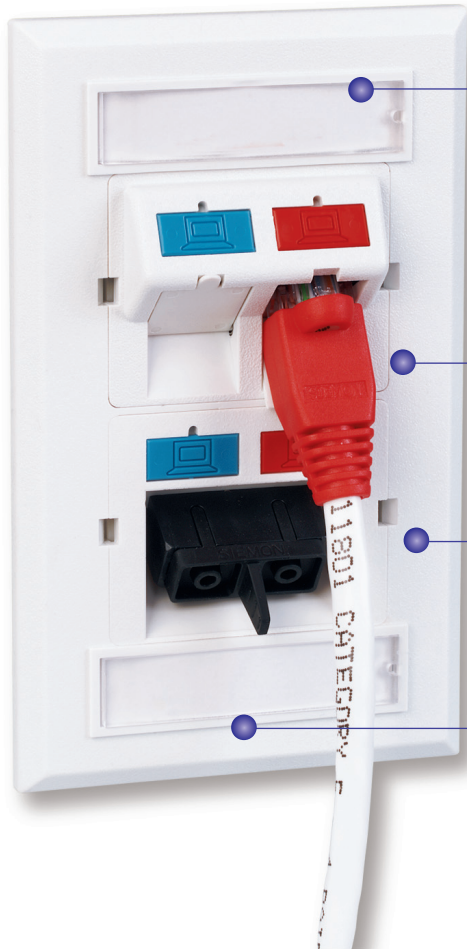


CT Faceplates

At the work area, Siemon CT faceplates offer a sleek, clean appearance for mounting CT couplers. Designation labels cover the mounting screws (included) and provide ample circuit identification.



PATENTED

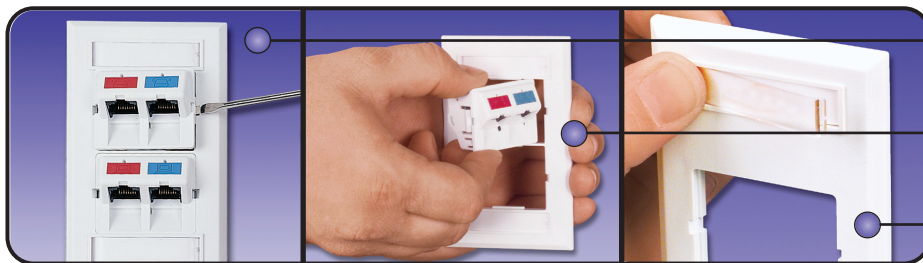


Write-on circuit designation labels — Protected by clear plastic cover conceal the mounting screws

Faceplates and CT couplers — Are available in a wide range of colors. Stainless steel versions are also available

UV resistant, high impact plastic — Prevents color fading and provides added durability

Sheets of designation labels — Can be ordered for use with desktop printers



Couplers — Can be easily snapped out of the front of the faceplates, making moves, adds, and changes quick and easy

Cutouts — Allow couplers to pass through plates enabling mounting of faceplates after cables are terminated

Faceplates — Include quick pressure-release designation label covers for quick, tool-less removal

ORDERING INFORMATION

CT Faceplates:



CT2-FP-(XX).....
Single gang plastic faceplate for one coupler



CT4-FP-(XX).....
Single gang plastic faceplate for two couplers



CT8-FP-(XX).....
Double gang plastic faceplate for four couplers



CT2-HFPA-(XX)*.....
Single gang plastic horizontal faceplate for one coupler with screw caps (#6-32 screws)

Use (XX) to specify color: 01 = black, 02 = white, 04 = gray, 20 = ivory, 80 = light ivory
Faceplates include designation label(s), clear label cover(s) and mounting screws

Ⓢ Add "B" to end of part number for bulk project pack, (includes 100 CT2 or CT4 faceplates or 50 CT8 faceplates, screws, designation labels and label covers).

*Not available in bulk project pack

Stainless Steel CT Faceplates:



CT4-FP-SS-L.....
Single gang stainless steel faceplate for two couplers with labels and label holders



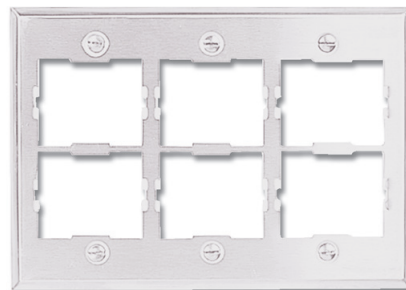
CT8-FP-SS-L.....
Double gang stainless steel faceplate for four couplers with labels and label holders



CT4-FP-SS.....
Single gang stainless steel faceplate for two couplers



CT8-FP-SS.....
Double gang stainless steel faceplate for four couplers



CT12-FP-SS.....
Triple gang stainless steel faceplate for six couplers

ORDERING INFORMATION

British CT Faceplates:

The CT series British faceplates are compatible with British standards (85mm x 85mm) and are designed to work with our complete line of CT couplers.



CTE2-FP-(XX)
Single gang British style faceplate
for one coupler



CTE4-FP22-(XX)
Single gang British style faceplate
for two couplers



CTE4-FP-(XX)
Double gang British style faceplate
for two couplers

Use (XX) to specify color: 02 = white, 82 = alpine white

International CT Adapters:



CTE-A-(XX)
50mm x 50mm adapter for one
coupler



CTE-45-(XX)L.....
45mm x 45mm adapter for one coupler



Use (XX) to specify color: 02 = white, 82 = alpine white

Use (XX) to specify color: 01 = black, 02 = white,
25 = bright white, 80 = light ivory, 82 = alpine white

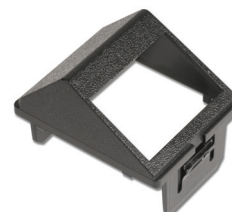
TERA® -MAX® Adapters for CT Faceplates:



CTE-MXA-01-(XX).....
Angled CT adapter for one
UTP MAX module or
TERA outlet



CTE-MXA-02-(XX).....
Angled CT adapter for two
UTP MAX modules or
TERA outlets



CTE-HZA-02-(XX)
Horizontal CT adapter for two UTP
MAX modules or
TERA outlets



Use (XX) to specify color:
01 = black, 02 = white

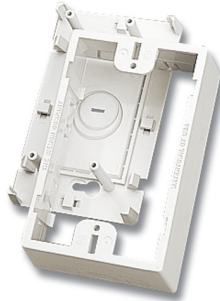
Use (XX) to specify color: 02 = white, 20 = ivory

ORDERING INFORMATION

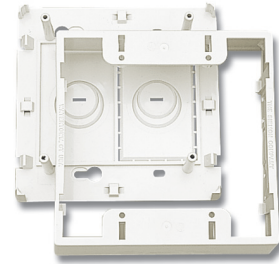
Faceplate Surface Mount Boxes:

These boxes offer a surface mounting option for CT single and double gang faceplates. These boxes are perfect for installations where the work area outlet cannot be recessed into a wall or floor box. Mounting hardware not included.

CT4-BOX-(XX)
 Surface mount box for one single gang CT faceplate
 height: 119.3mm (4.70 in.),
 width: 74.8mm (2.95 in.),
 depth: 40.6mm (1.60 in.)



CT8-BOX-(XX)
 Surface mount box for one double gang CT faceplate
 height: 119.3mm (4.70 in.),
 width: 120.8mm (4.76 in.),
 depth: 40.6mm (1.60 in.)



Use (XX) to specify color: 01 = black, 02 = white, 04 = gray, 20 = ivory, 80 = light ivory

British Faceplate Surface Mount Boxes:

CTE2-BOX-02
 Single gang surface mount box for British CT faceplates, white



CT Modular Furniture Adapters:

CT-MFP-(XX)Standard adapter (accepts one CT coupler)
 CT-MFP-HMA-(XX)Adapter for Herman Miller Series 2 & Ethospace Base openings (accepts two CT couplers)

Use (XX) to specify color: 01 = black, 02 = white, 04 = gray, 20 = ivory, 80 = light ivory



Because we continuously improve our products, Siemon reserves the right to change specifications and availability without prior notice.

**Worldwide Headquarters
 North America**
 Watertown, CT USA
 Phone (1) 860 945 4200

**Regional Headquarters
 Europe Russia Africa**
 Chertsey, Surrey, England
 Phone (44) 0 1932 571771

**Regional Headquarters
 China**
 Shanghai, P.R. China
 Phone (86) 215385 0303

**Regional Headquarters
 Latin America**
 Bogota, Colombia
 Phone (571) 657 1950/51/52

**Regional Headquarters
 India Middle East**
 Dubai, United Arab Emirates
 Phone (971) 4 3689743

**Regional Headquarters
 Asia Pacific**
 Sydney, Australia
 Phone (61) 2 8977 7500

**Siemon Interconnect Solutions
 Watertown, CT USA**
 Phone (1) 860 945 4213 US
 www.siemon.com/SIS