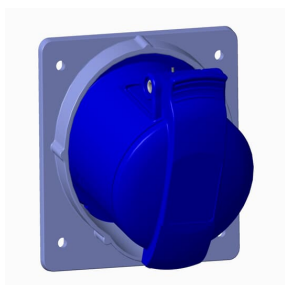


PRODUCT-DETAILS

216RAM6

Socket-outlet, panel mounting, 6h, 16A, IP44, minimized flange, angled, 2P+E



Información General

Extended Product Type	216RAM6
Product ID	2CMA170004R1000
EAN	7392696700047
Catalog Description	Socket-outlet, panel mounting, 6h, 16A, IP44, minimized flange, angled, 2P+E
Long Description	Panel mounted socket, earthing sleeve position 6h, rated current 16A, IP44 splashproof, minimized flange, angled, 2-poles+earth, frequency 50-60 Hz, color code Blue

Clasificación

E-Number (Sweden)	E2416461
E-Number (Finland)	2421404
E-Number (Norway)	1564532
EAN	7392696700047
Country of Origin	Czech Republic (CZ)
Minimum Order Quantity	10 piece

Dimensiones

Product Net Width	78 mm
Product Net Height	78 mm

Product Net Length	84 mm
Product Net Depth / Length	84 mm
Product Net Weight	0.14 kg

Información de Embalaje

Package Level 1 Width	138 mm
Package Level 1 Depth / Length	158 mm
Package Level 1 Height	345 mm
Package Level 1 Gross Weight	1.4 kg
Package Level 1 EAN	7392696702027
Package Level 1 Units	box 10 piece
Package Level 2 Units	660 piece

Technical UL/CSA

Ampere Rating UL/CSA	16 A
Tightening Torque UL/CSA	7.1 in·lb

Certificados y Declaraciones (Número de Documento)

Declaration of Conformity - CE	2CMC700005D0001
Declaration	2CMC700005D0001
Environmental Information	2CMC000056M0000
RoHS Information	2CMC700005D0001
SEMKO Certificate	1614201
REACH Declaration	2CMC700005D0001

Información Adicional

Additional Information	2P+E
Ambient Temperature	-25 ... 40 °C
Cable Cross-Section	1.5 ... 4 mm ²
Cable Diameter	6 ... 13 mm
Color	Blue
Connection Type	Screw
Degree of Protection	IP44
Frequency (f)	50 Hz 60 Hz
Function	Panel mounted socket
Housing Material	Plastic (PA)
Invoice Description	Ind. P&S#216RAM6
Mounting Holes	55x55
Mounting Type	Minimized angled flange

Number of Poles	3
Order Multiple	10 piece
Product Main Type	ERAM
Product Name	Panel mounted socket
Protection Type	Splashproof
Rated Current (I_n)	16 A
Rated Frequency (f)	50...60 Hz
Rated Voltage (U_r)	200 ... 250 V
Recommended Screw Driver	PH2
RoHS Date	L23
Standards	IEC 60309-1, -2
Suitable For	Socket Outlets for Panel Mounting
Suitable for Product Class	IEC Industrial Plugs and Sockets
Instructions and Manuals	2CMC700002D0001
RAL Number	RAL 7001 - Gris plata

Clasificaciones

eClass	27440504
UNSPSC	39121406

Technical

Wire Size	14 ... 12 AWG
Tightening Torque	0.8 N·m

Categorías

Productos y sistemas de baja tensión → Tomas de corriente industriales → Easy & Safe → Socket Outlets for Panel Mounting



