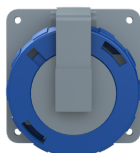


PRODUCT-DETAILS

232RAU6W

Ind. P&S#232RAU6W



Información General

Extended Product Type	232RAU6W
Product ID	2CMA166948R1000
EAN	7392696669481
Catalog Description	Ind. P&S#232RAU6W
Long Description	Socket-outlet, panel mounting, earthing sleeve position 6h, rated current 32A, IP67 watertight, unified flange, angled, 2-poles+earth, frequency 50-60 Hz, color code Blue

Clasificación

E-Number (Sweden)	E2416718
E-Number (Finland)	2421292
E-Number (Norway)	1561932
EAN	7392696669481
Country of Origin	Czech Republic (CZ)
Minimum Order Quantity	1 piece

Dimensiones

Product Net Width	95 mm
Product Net Height	117 mm

Product Net Length	104 mm
Product Net Depth / Length	117 mm
Product Net Weight	0.276 kg

Información de Embalaje

Package Level 1 Width	112 mm
Package Level 1 Depth / Length	112 mm
Package Level 1 Height	139 mm
Package Level 1 Gross Weight	0.323 kg
Package Level 1 EAN	7392696669481
Package Level 1 Units	box 1 piece
Package Level 2 Units	350 piece

Technical UL/CSA

Ampere Rating UL/CSA	32 A
Tightening Torque UL/CSA	10.6 in-lb

Certificados y Declaraciones (Número de Documento)

Declaration of Conformity - CE	2CMC700005D0001
Declaration	2CMC700005D0001
Environmental Information	2CMC000056M0000
RoHS Information	2CMC700005D0001
SEMKO Certificate	1613211
REACH Declaration	2CMC700005D0001

Información Adicional

Additional Information	2P+E
Ambient Temperature	-25 ... 40 °C
Cable Cross-Section	2.5 ... 10 mm ²
Cable Diameter	13 ... 21.5 mm
Color	Blue
Connection Type	Screw
Degree of Protection	IP67 IP69
Frequency (f)	50 Hz 60 Hz
Function	Socket outlet, panel mounting, unified flange, angled
Housing Material	Thermoplastic (PBT)
Invoice Description	Ind. P&S#232RAU6W
Mounting Holes	79.5x79.5

Mounting Type	unified flange, angled
Number of Poles	3
Order Multiple	1 piece
Product Main Type	TRAU
Product Name	Panel mounted socket
Protection Type	Watertight
Rated Current (I_n)	32 A
Rated Frequency (f)	50...60 Hz
Rated Voltage (U_r)	200 ... 250 V
Recommended Screw Driver	PH2
RoHS Date	L23
Standards	IEC 60309-1, -2
Suitable For	Socket Outlets for Panel Mounting
Suitable for Product Class	IEC Industrial Plugs and Sockets
Instructions and Manuals	2CMC700002D0001
RAL Number	RAL 7001 - Gris plata

Clasificaciones

eClass	27440504
UNSPSC	39120000

Technical

Wire Size	12 ... 10 AWG
Tightening Torque	1.2 N·m

Categorías

Productos y sistemas de baja tensión → Tomas de corriente industriales → Tough & Safe → Socket Outlets for Panel Mounting

