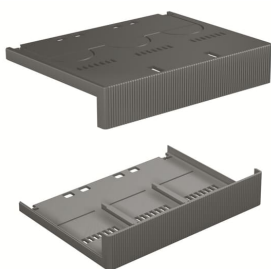


PRODUCT-DETAILS

TERMINAL COVERS LOW 3P S6-T6

TERMINAL COVERS LOW 3P S6-T6



Información General

Extended Product Type	TERMINAL COVERS LOW 3P S6-T6
Product ID	1SDA014038R1
EAN	8015644140380
Catalog Description	TERMINAL COVERS LOW 3P S6-T6
Long Description	LOW TERMINAL-COVERS THREE-POLE S6-T6

Clasificación

EAN	8015644140380
Minimum Order Quantity	1 piece
Customs Tariff Number	85389099

Dimensiones

Product Net Weight	0.203 kg
--------------------	----------

Información de Embalaje

Package Level 1 Units	1 piece
Package Level 1 Gross Weight	0.203 kg
Package Level 1 EAN	8015644140380

Información Adicional

Configuration Type	Loose or configurable
Device	S6 - 3 pole
Number of Poles	3
Product Main Type	Accessories for Tmax T
Product Name	Accessory
Product Type	ACC
Standards	IEC
Suitable For	S6, T6
Suitable for Product Class	SACE Tmax T SACE Isomax

Certificados y Declaraciones (Número de Documento)

Data Sheet, Technical Information	1SDC210015D0201
Declaration of Conformity - CE	1SDL000165R0001
Environmental Information	1SDC210015D0201
Instructions and Manuals	1SDC210015D0201

Clasificaciones

ETIM 6	EC002268 - Cover cap for rail terminal bar
ETIM 7	EC002268 - Cover cap for rail terminal bar
Object Classification Code	Q
WEEE Category	5. Small Equipment (No External Dimension More Than 50 cm)

Categorías

Productos y sistemas de baja tensión → Interruptores automáticos → Interruptores automáticos en caja moldeada → Accessories for Isomax

Productos y sistemas de baja tensión → Interruptores automáticos → Interruptores automáticos en caja moldeada → Accessories for Tmax T

